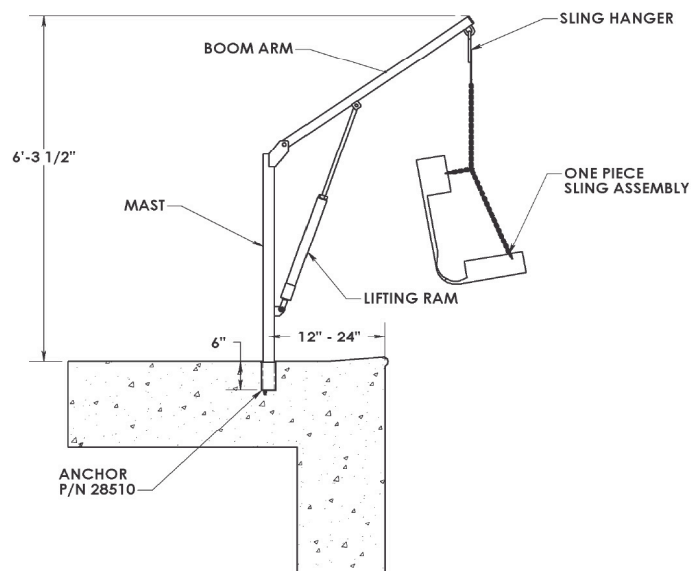


SWIM-LIFT SERIES - 'ELKHORN'



- 400 lb rated load with a 1.5 safety factor
- Certified, stamped engineering drawings and calculation supporting strength and seismic loading
- One-piece mesh sling assembly
 - Dries quickly
 - Adjustable
- Stainless steel chain and spreader bar
- Exclusive dual passivation process ensures maximum corrosion resistance
- Unit is designed to accommodate both in-ground and above ground (up to 31" wall height) applications
- 12"-24" setback range allows for use with large gutters and coping stones
- Portable and lightweight
 - 55 lb shipping weight
- Unit requires no electrical connections
- Easy to install, even on existing facilities
- Optional adapter allows Elkhorn to be installed in existing anchors
- Two-year warranty

