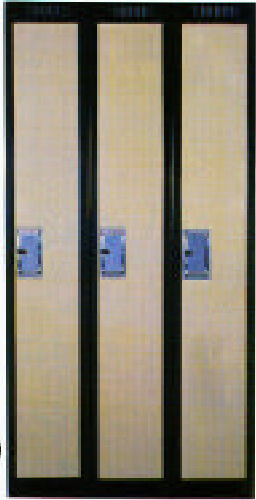


SMART LINE LOCKERS

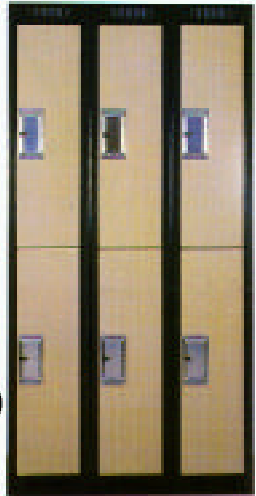


SINGLE TIER LOCKER:

The single tier locker is the most practical and widely used of all types of lockers, since it provides ample height for full length garments. Each unit has a top shelf for hats, gloves, lunches, etc. Every locker has three coat hooks, padlock hasp, number plate holder, friction catch and rubber bumpers.

DOUBLE TIER LOCKERS:

The double tier locker reduces the cost per person in restricted floor areas. Well suited for short period occupancy and where short garments are worn. Each compartment has three coat hooks, friction catch and rubber bumpers. Double tier lockers have no hat shelves.



SIX TIER LOCKERS:

Six tier lockers have a wide variety of uses in offices, retail stores, restaurants, laboratories, gymnasiums, arenas, bowling alleys, etc. Each door is equipped with padlock hasp and number plate holder. These lockers have no coat hooks.



TOP AND BOTTOM FRAME MEMBERS provide rigid construction and flow thru ventilation

DOUBLE PAN BOX WELDED DOOR 20 gauge outer panel and 24 gauge full door width inner reinforcing panel. Six tier door is single pan design.

20 GAUGE DOOR with baked enamel paint finish

RECESSED NUMBER PLATE HOLDER

RECESSED CHROME POCKET to prevent paint chipping of pocket and/or adjacent door

16 GAUGE ONE PIECE INTEGRAL RIGHT HAND HINGE AND FRAME

SIZES AVAILABLE

Single Tier 12"W x 18"D x 72"H or 12"W x 15"D x 72"H

Double Tier 12"W x 18"D x 72"H or 12"W x 15"D x 72"H

Six Tier 12"W x 18"D x 72"H or 12"W x 15"D x 72"H



Voice: 1-800-667-0677, Fax: 1-800-663-6338, E-Mail: dizard@dizard.com